

JETMATIC & DUOJET

MACH 3 Automatic Nozzles

" MACH 3 nozzles, fast reflexes in the face of fire "

Guarantee
10
years



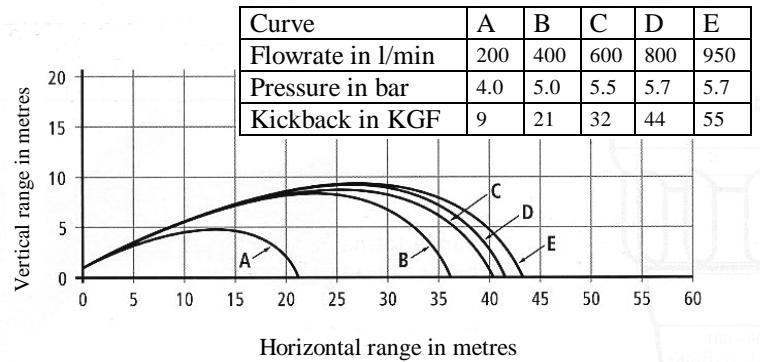
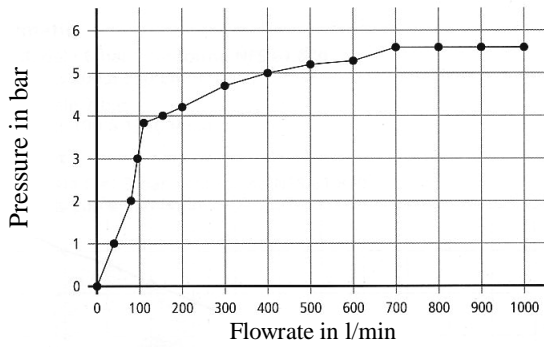
Duojet PA



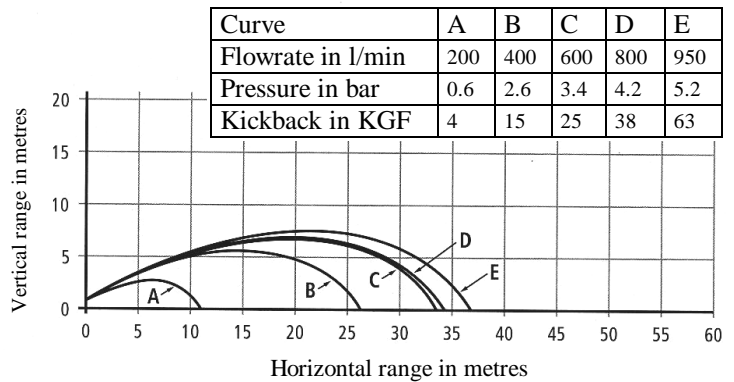
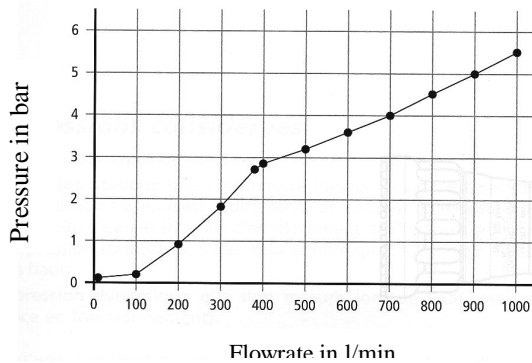
Jetmatic PP

- ◆ The **JETMATIC** nozzle has a 6 bar pressure regulation system
- ◆ The **DUOJET** nozzle operates at normal or low pressure, by a single turn of the front knob
- ◆ Regulated pressure means a relatively constant range .
- ◆ The 6 open positions plus shut-off are operated from a single handle for immediate reaction.
- ◆ The full cone fog beats back flames and forms a protective shield
- ◆ Foam can be used with the POLYFOAM adaptors
- ◆ The full jet can be regulated to maximum spray angle in a quarter of turn
- ◆ Hard anodised aluminium body
- ◆ Stainless steel sliding valve
- ◆ New, ergonomically designed, anti-freeze handle
- ◆ Stainless steel filter at inlet
- ◆ Unbreakable « Superblack » moulded rubber teeth

Jetmatic and Duojet at standard regulated pressure (6 bar)



Duojet at low pressure



Standard regulation (Jetmatic/Duojet)



Low pressure regulation (Duojet)

CARACTERISTIQUES

Model	Reference	Weight (kg)	Flowrate (l/min)	Pressure	Inlet	Polyfoam BF	Polyfoam MF
JETMATIC PP	I11.20.021	3.6	200-950	6 bar	2 ½ "	I11.80.117	I11.80.119
JETMATIC PA	I11.20.031	4.5	200-950	6 bar	2 ½ "	I11.80.117	I11.80.119
JETMATIC MN	I11.20.027	3.6	200-950	6 bar	2 ½ "	I11.80.117	I11.80.119
DUOJET PP	I11.21.014	3.7	200-950	3 et 6 bar	2 ½ "	I11.80.117	I11.80.119
DUOJET PA	I11.21.004	4.9	200-950	3 et 6 bar	2 ½ "	I11.80.117	I11.80.119

Maintenance : extremely reduced maintenance because of the very robust design of the nozzle and of materials used.

We are constantly seeking to improve our products. Consequently, we reserve the right to change the specifications of our equipment at any moment and without notice