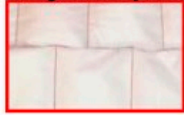




The RedVac System for EMS Vacuum Extremity Splints

The Multi-Chamber-System keeps the beads in the right position and makes application easy and quick



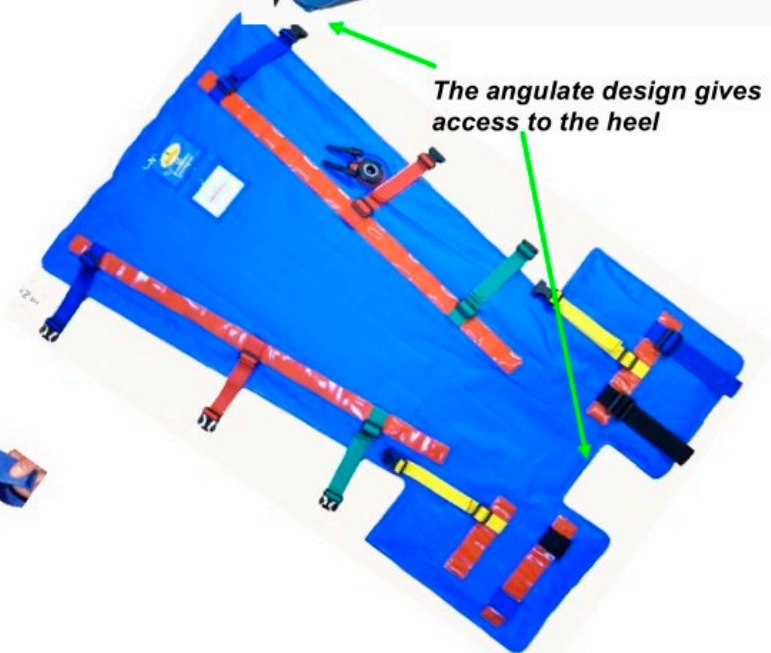
Rugged, biocompatible exterior material, easy to clean and disinfect



Automatically closing valve



The RedVac strap system
Red TPU-strips for attachment of removable straps with buckles. Removable colour coded patient restraint straps, easy to clean, reposition and replace. Adjustable from both sides



The angulate design gives access to the heel

Optional strap systems

Red stripes for attachment of removable Loop straps. Non-removable Hook straps are welded onto the splint



Red stripes for attachment and positioning of removable wrap-around Hook & Loop straps



Cleets for attachment of removable straps with buckles



Non-removable Hook-and-Loop straps welded onto the splint





Angulate Design for optimal fit - Access to the heel

	<p>VS63X01 Arm/Ankle Splint 5 straps Width top/foot: 43cm/70cm Length: 56cm Weight: 0,9kg</p>
	<p>VS65X01 Leg Splint 5 straps Width top/foot: 64cm/70cm Length: 103cm Weight: 1,9kg</p>

Standard Straight Design

	<p>VA14X01 Arm Splint 4 straps Width, top/hand: 50cm/30cm Length: 67cm Weight: 0,9kg</p>
	<p>VK15X01 Wrist/Ankle Splint 4 straps Width: 47cm Length: 57cm Weight: 0,9kg</p>
	<p>VL21X01 Leg Splint 5 straps Width top/foot: 70cm/40cm Length: 110cm Weight: 1,9kg</p>
	<p>VL18X01 Leg Splint 5 straps Width top/foot: 70cm/45cm Length: 135cm Weight: 2,1kg</p>